

Fitting Instructions

Step 1: Place the wall bracket on the wall above the radiator, ensuring the bottom edge of the bracket is no lower than the top edge of the radiator. This ensures the correct height is achieved for the cover to clear your radiator. Ensure the bracket is positioned centrally between the length measured over the radiator valves and mark through the holes with a pencil.



Step 2: Drill the holes in the areas just marked and fit wall plugs.



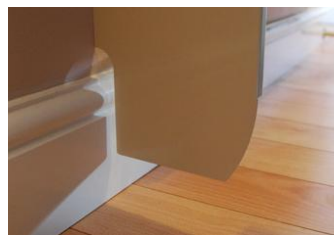
Step 3: Fix the bracket to the wall with screws.



Step 4: Ensure the bracket is fixed firm and level.



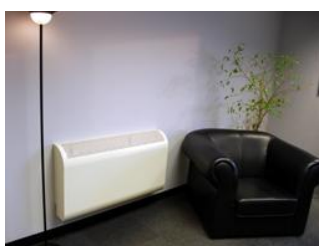
Step 5: Lift the coradco cover over the radiator and carefully lower it onto the wall bracket.



Step 6: Ensure there is a gap between the bottom of the coradco cover and the floor to ensure airflow through the cover.



Step 7: Fit the 'Anti-Tilt' brackets, these are fitted inside the cover on the bottom of the end panel return flange.



Step 8: Wipe off any finger marks or dust and you are finished.

Please Note : these brackets are provided as additional security to stop the bottom of the coradco cover from being pulled away from the wall. The cover will still hang safely and securely without them.